
AN1162 Demonstration ReadMe for the dsPICDEM™ MCHV-2 Development Board with the dsPIC33EP256MC506 Internal Op Amp PIM (MPLAB 8)

1.1 INTRODUCTION

This document describes the setup requirements for running the Sensorless FOC with a PLL Estimator, which is referenced in AN1162 “*Sensorless Field Oriented Control of an AC Induction Motors using dsPIC DSC*” using a dsPICDEM™ MCHV-2 Development Board in the Internal Op amp configuration.

1.2 SUGGESTED DEMONSTRATION REQUIREMENTS

MPLAB and C30 versions used:

- MPLAB version 8.84 (or later)
- C30 version 3.31 (or later)

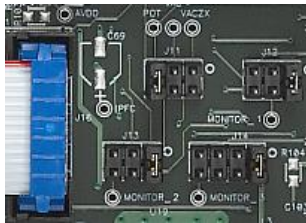


Hardware used with part numbers:

- dsPICDEM MCHV-2 Development Board (DM330023-2)
 - available at www.microchipdirect.com
- dsPIC33EP256MC506 Internal Op amp PIM (MA330031)
 - available at www.microchipdirect.com
- 220V ASIM (e.g., the 4IK25A-SW2) available from www.orientalmotor.com

1.3 HARDWARE SETUP

The following hardware setup allows the sensorless FOC algorithm to run on the dsPICDEM MCHV-2 Development Board using Op amps that are internal to the dsPIC33EP256MC506 device.

1. With the dsPICDEM MCHV-2 Development Board disconnected, and making sure there is no power, open the enclosure and set up the following jumpers:

Jumper	Pins to Short	Board Reference
J11 (inside the enclosure)	Don't care	
J12 (inside the enclosure)	Don't care	
J13 (inside the enclosure)	Don't care	
J14 (inside the enclosure)	Don't care	
PWM OUTPUTS (front of the enclosure)	ENABLE position	
USB (front of the enclosure)	USB position	

2. Connect the ACIM motor to the output header J17. The motor wires can be connected in any order since this is a sensorless control algorithm.
3. Connect the Internal Op amp Configuration Board into J4. Ensure that the configuration board is correctly oriented before proceeding.



4. Secure the dsPICDEM MCHV-2 Development Board enclosure.
5. Connect the dsPICDEM MCHV-2 Development Board to AC input (90 to 265 VAC).



Demonstration ReadMe

6. Using a mini-USB cable, connect the computer to the PROGRAM/DEBUG mini-USB connector located on the front panel of the dsPICDEM MCHV-2 Development Board enclosure.



7. For enhanced demonstration, the application requires the Real-Time Data Monitor (RTDM). Users can connect a mini-USB cable from their computer to the J6 connector of the dsPICDEM MCHV-2 Development Board.



Notice that when the development board is powered and connected to the USB host for the first time, the driver needs to be installed on the host for proper operation.

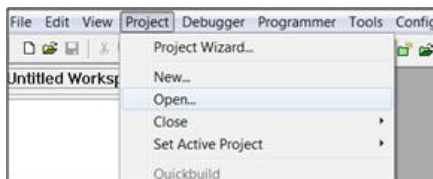
- a) Extract the `PC_USB_driver_for_win2k_xp_vista32_64.zip` archive file to a local directory. This file is part of the ZIP file of the code.
- b) When prompted to select the driver for new USB device found, select the driver from the ones provided corresponding to the operating system used: Windows 2000, XP, or Vista (32- or 64-bit). Wait for the indication that the new device was installed properly and is ready to be used. Once the USB driver is installed, it will emulate a Serial COM Port, visible in the Windows Device Manager. A message indicating that the driver has not passed Windows logo certification may appear. Click **Continue Anyway**.
- c) When the USB driver is installed, a new COM port should show up in Windows device hardware manager. This should be the COM port used for Enhanced Demonstration.

1.4 SOFTWARE SETUP AND RUN

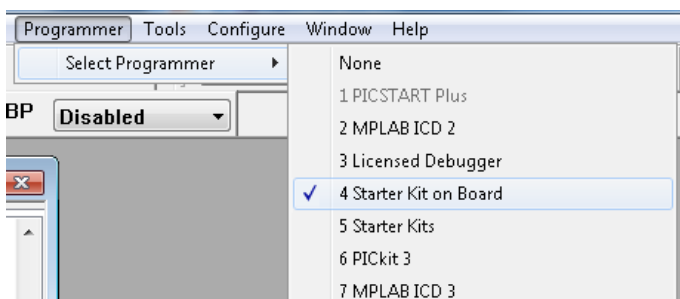
1.4.1 Basic Demonstration

This demonstration consists of running the motor using a push button and varying the speed with a potentiometer. The software, which is available for download from the Microchip website, is already configured for enabling the basic demonstration.

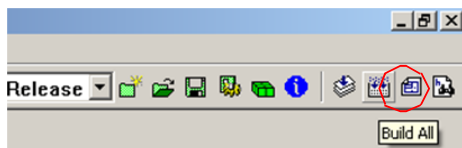
1. Start MPLAB IDE and open the `PMSM.mcp` workspace.



2. Select Programmer>Starter Kit on Board.



3. Build the code by selecting the **Release** mode from the drop-down list and clicking the **Build All** icon.



4. Download the code to the dsPICDEM MCHV-2 Development Board.



5. Run or stop the motor in Open Loop by pressing S1 (labeled PUSHBUTTON). Subsequent presses of S1 toggles the motor operation between Closed Loop and Open Loop.



6. Vary the motor speed using the potentiometer.

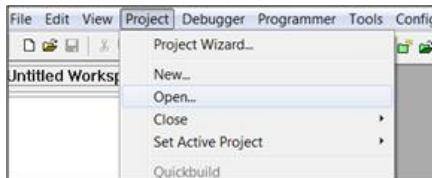


1.4.2 Enhanced Demonstration Using Real-Time Data Monitor (RTDM) and Dynamic Monitor and Control Interface (DMCI)

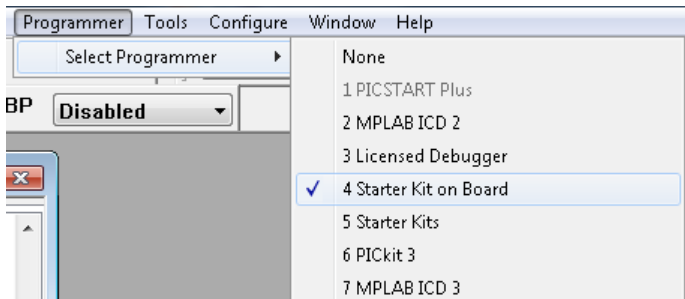
1. In order to utilize RTDM communication for this demonstration, a mini-USB connection is required. Connect a mini-USB cable from your computer to the J6 connector on the dsPICDEM MCHV-2 Development Board, labeled USB.



2. Start MPLAB IDE and open the PMSM.mcp workspace



3. Select Select Programmer>Starter Kit on Board.



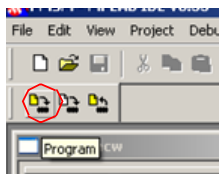
4. Make sure that RTDM_DEMO is defined in the UserParms.h file. If this is not defined, the DMCI data between the target and the host will not be exchanged. In addition, the motor will not start until the S1 push button is pressed.

```
/* define the line below for RTDM control demo */  
#define RTDM_DEMO
```

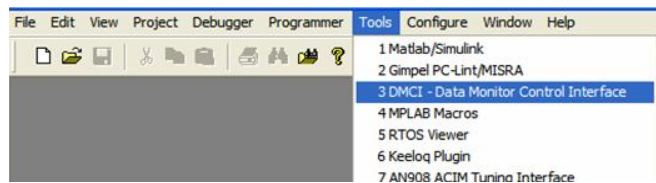
5. Build the code by selecting the **Release** mode from the drop-down list and clicking the **Build All** icon.



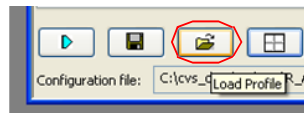
6. Download the code to the dsPICDEM MCHV-2 Development Board.



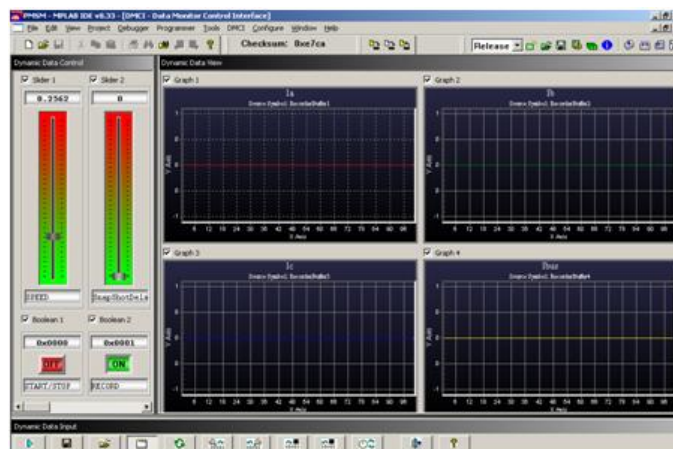
- Open the DMCI window by selecting Tools>DMCI – Data Monitor Control Interface.



- Click **Load Profile**, and from the same folder where your project resides, load the `DEMO.dmc.i` file, which contains a previously configured profile.



- The DMCI window appears as follows:



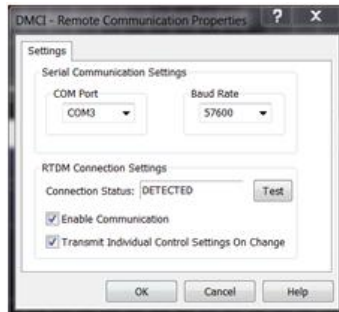
Please consult the “*Real-Time Data Monitor User’s Guide*” (DS70567) for additional settings needed for a RTDM connection. This document explains the steps needed for the proper communication settings between the Host and Embedded side.

- Select DMCI>Remote Communication to connect RTDM with your computer.



Demonstration ReadMe

11. Remote Communication needs to be established, as indicated in the following figure (the communication baud rate should be set to 57600, while the COM port used depends on your particular settings).



12. Run or stop the motor in Open Loop by pressing S1 (labeled PUSHBUTTON). Subsequent presses of S1 toggles the motor operation between Closed Loop and Open Loop.



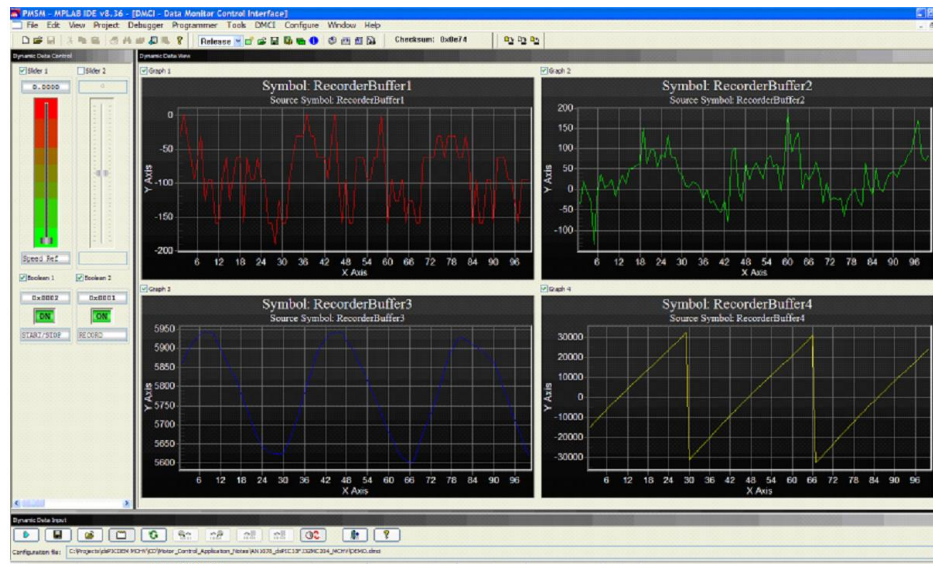
13. Vary the motor speed using the potentiometer.



14. To plot variables in real time, enable Automated Event Control by clicking the DMCI icon.



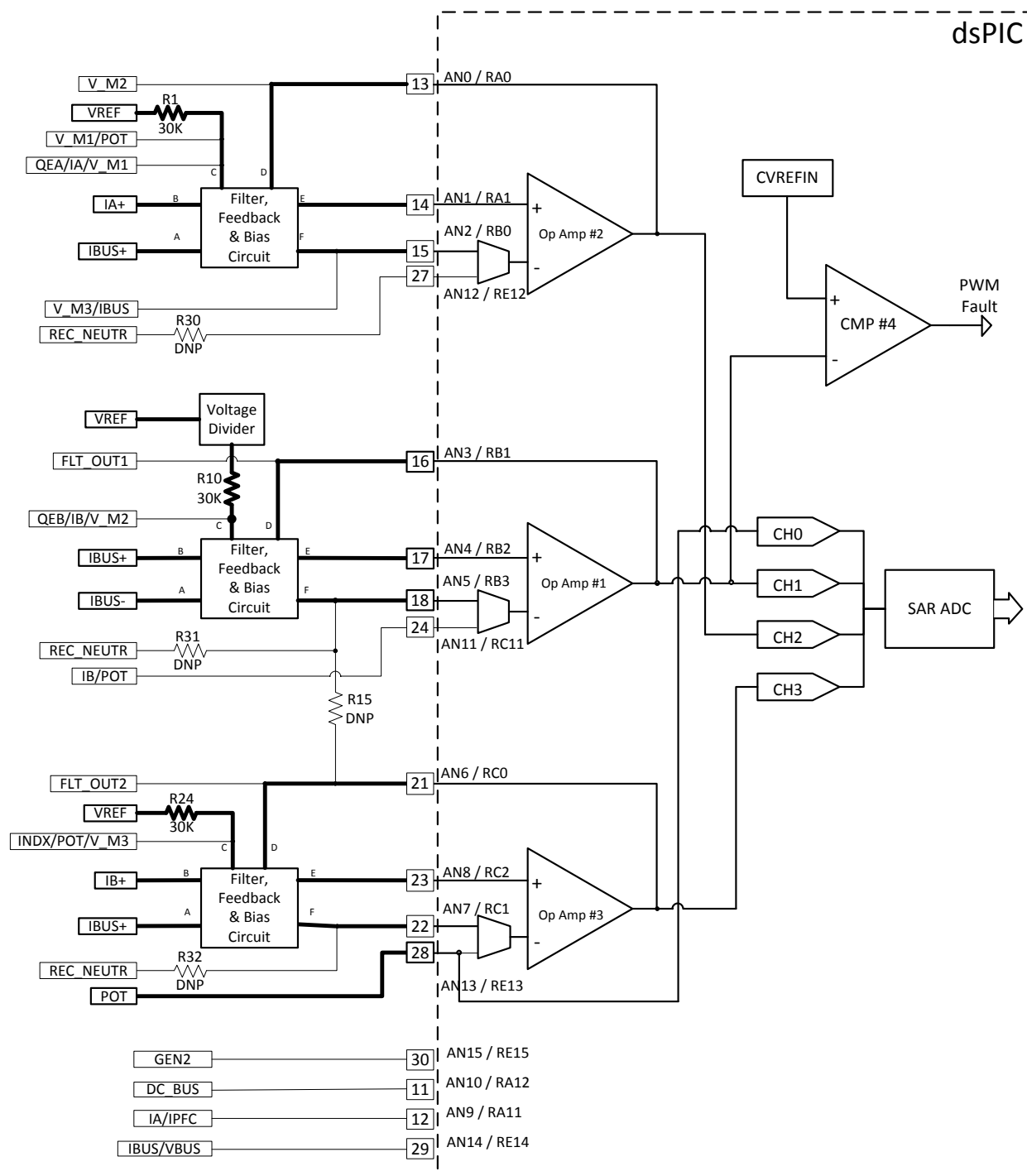
15. The DMCI window shows variables plotted in real time, which are updated automatically.



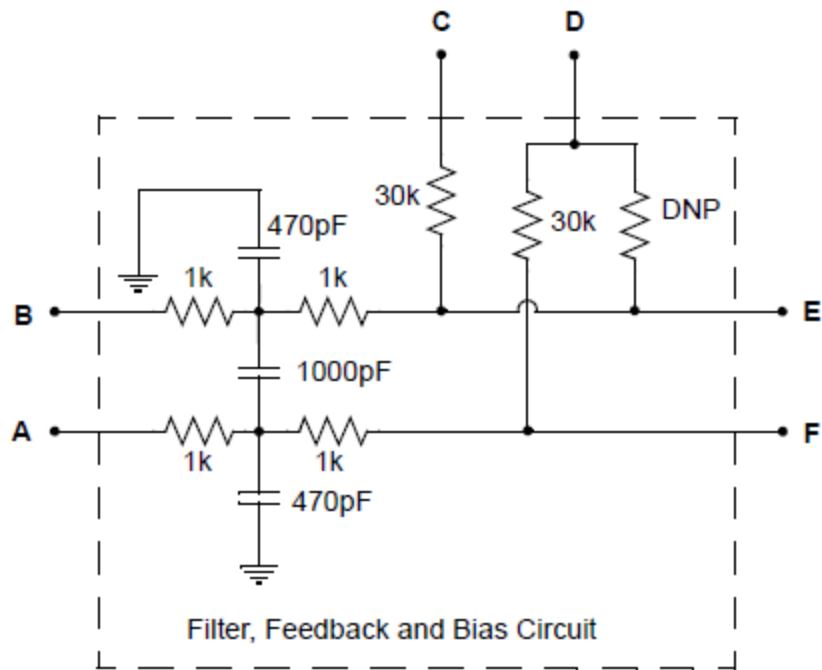
1.5 I/O CONFIGURATION

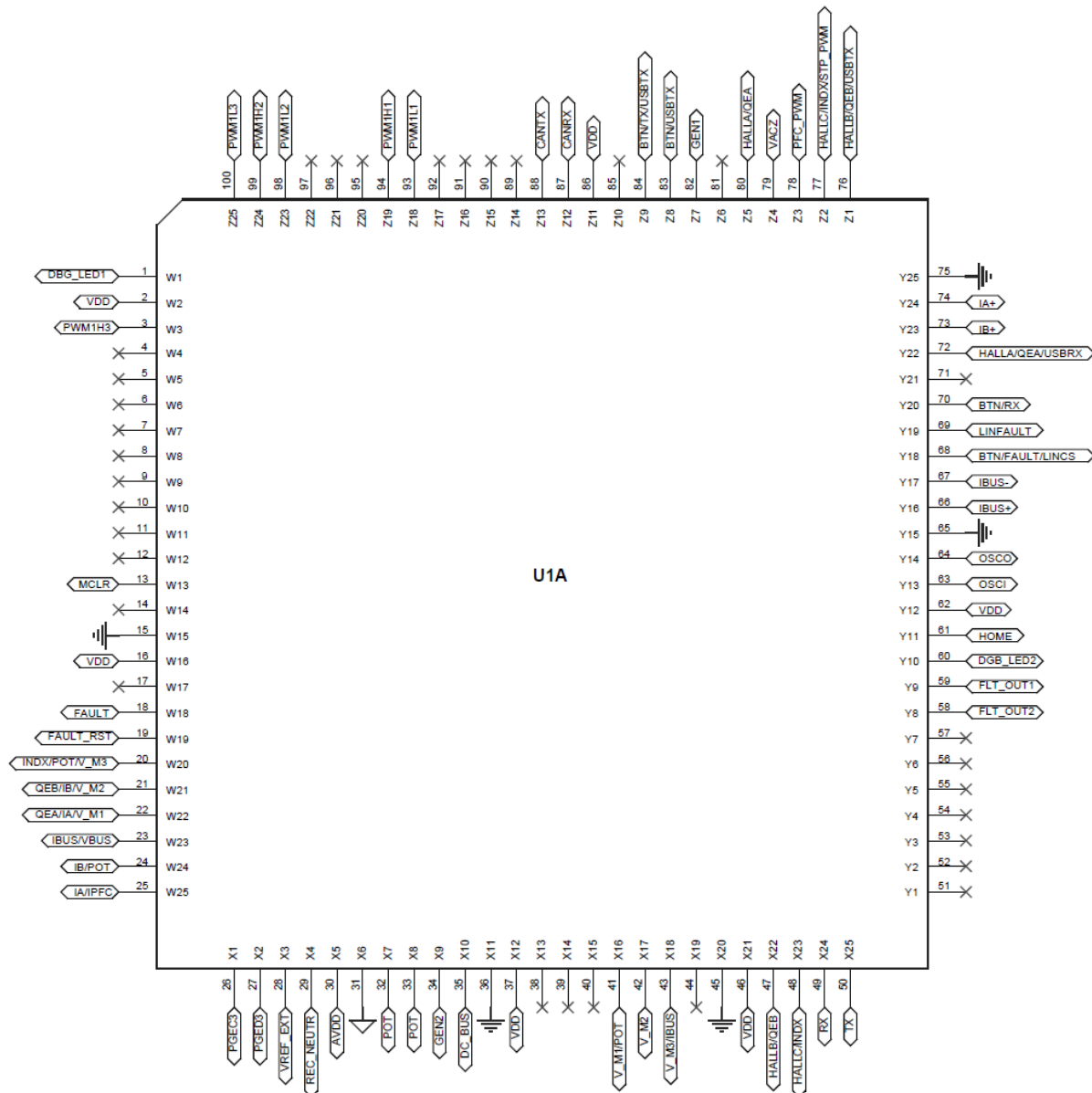
1.5.1 Analog I/O Configuration

The following figure shows a block diagram of the analog signal paths on the PIM (MA330031) and a description of their connections inside the dsPIC DSC device (dsPIC33EP256MC506). The analog signal paths used in this demonstration are highlighted. For details regarding the PIM schematics, refer to the PIM information sheet document, available at www.microchip.com/pims.



Note: Connections depicted inside the dsPIC block depend on the configuration settings selected in the software.





1.5.2 Digital I/O Configuration

Functional Description	Device Pin Function	Input/Output
PWM	RB10 through RB15	Output
Switch	RB8	Input
UART RX	RC5	Input
Debug LED1	RD6	Output
Debug LED2	RD5	Output
Test Point	RD8	Output
UART TX	RF1	Output

NOTES